

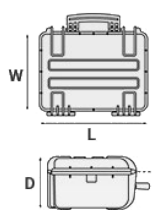
Mod. 11413.BGB

COPOLYMER POLYPROPYLENE WATERPROOF CASE

Strong medium rifle case for standard rifles. Ball bearing wheels and side handles. Jam free latches with easy-opening mechanism.



METRIC MM-KG-C°



INTERNAL DIMENSIONS

L LENGTH	1136 mm
W WIDTH	350 mm
D DEPTH	135 mm
LID	42 mm
BASE	93 mm

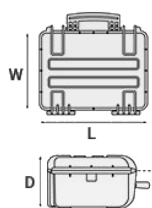
EXTERNAL DIMENSIONS

L LENGTH	1189 mm
W WIDTH	415 mm
D DEPTH	159 mm

OTHER DATA

WEIGHT EMPTY	7.80 Kg
WEIGHT WITH FOAM	8.80 Kg
WEIGHT WITH CUSTOM FOAM	Kg
VOLUME	53.70 lt
BUOYANCY	33.30 Kg/max
OPERATING TEMPERATURE	°C min -33 / max +90

IMPERIAL IN-LBS-F°



INTERNAL DIMENSIONS

L LENGTH	44 3/4 in
W WIDTH	13 3/4 in
D DEPTH	5 5/16 in
LID	1 5/8 in
BASE	3 11/16 in

EXTERNAL DIMENSIONS

L LENGTH	46 13/16 in
W WIDTH	16 5/16 in
D DEPTH	6 1/4 in

OTHER DATA

WEIGHT EMPTY	17.19 lbs
WEIGHT WITH FOAM	19.40 lbs
WEIGHT WITH CUSTOM FOAM	lbs
VOLUME	14.18 gal
BUOYANCY	73.41 lbs/max
OPERATING TEMPERATURE	°F min -27.4 / max +194

FEATURES



AUTOMATIC VALVE

Automatic pressure release valve.



CORROSION PROOF METAL HINGES WITH LID STAY FEATURES



INTERNAL SLOTS

Internal slots for optional panel mounting brackets or panel mounting rings



LARGE FRONT HANDLE



JAM FREE LATCHES WITH EASY-OPENING MECHANISM

(from model 3818 on)



SEALING O-RING

(Art. NEOSEAL + nr. art.)



PVC WATERPROOF I. D. REMOVABLE LABEL

(Art. LABELCOVER + nr. art.)



OPTIONAL SHOULDER STRAP (universal)

(art. SHOULDERKIT.U)



TWO MAN LIFT SIDE HANDLES



WHEELS WITH BEARINGS

ACCESSORIES



PADDED GUN BAG FOR CASE 11413

GSLEEVE 114

Designed to secure your valuable rifle and accessories, the new G Sleeve bags provide protection in a highly mobile condition. A lightweight ruggedized 600D polyester outer fabric protects from humidity, while a padded interior keeps your rifle well protected. The internal rifle retention straps and the neoprene side flaps keep your firearm properly fixed.



PROTECTIVE SLEEVE FOR PC 15"-15.6"

TOP ENVELOPE 15

Protective padded notebook sleeve. Protects the laptop from shocks and scratches.



PROTECTIVE SLEEVE FOR PC 13"-13.3"

TOP ENVELOPE 13

Protective padded notebook sleeve. Protects the laptop from shocks and scratches.

HBAG114



PADDED TWIN GUN BAG FOR CASE 11413

HBAG114

The new hunting gun sleeves are the latest accessories to carry and securely protect two guns inside our hard waterproof cases. These bags couple and lock together, or can be used also independently to carry the gun on the field.

Fits into 11413 case - x 2 pcs.



ADJUSTABLE SHOULDER KIT

SHOULDERKIT.U

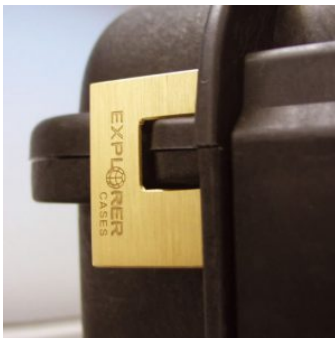
The kit is composed by: shoulder strap with plastic endings, 4 threaded knots, 2 metal plates. (min. extension 106 cm, max. extension 201 cm). The strap comes with the Explorer logo. Suitable for models: 1908, 1913, 2209, 2214, 3005, 4412, 4419, 5117, 9413, 11413 and 13513.



HANDY BACKPACK CARRYING SYSTEM FOR GUNBAGS

BACKPACK KIT

Practical and easy to fix kit to turn the gunbags into backpacks to safely transport your rifles. The detachable, padded shoulder straps, clip right in the back of the gunbags D-rings. The ergonomic straps are designed to be fully adjustable in length. It works on GUNBAG 94, GUNBAG 114, GUNBAG 135 and GUNBAG 108. Color: black.



PATENTED HEAVY DUTY BRASS PADLOCK WITH KEYS

EXPL PADLOCK

Designed to fit snug to the Explorer case mould so as not to swing out



DIGITAL LOCK FOR CASES 9413, 9433, 11413, 13513, 13527, 15416, 10826 AND 10840

KIT.DL

Kit includes 2 pcs.



PATENTED COMBINATION PADLOCK

EXPL COMBILOCK

Designed to fit snug to the Explorer case mould so as not to swing out



BLIND INSERT

KIT.EXPL.PLUGS

Kit includes 6 pcs. Whenever the slots are not going to be used for in-built applications, those can be closed by blind inserts that will give the case a better and finished interior look.



TSA APPROVED PADLOCK WITH COMBINATION

EXPL TSA.DIGILOCK

The new TSA approved padlocks allow tsa® airport security agents to open the case without destroying the lock. TSA agents are trained to recognize the travel sentry certified logo and should not break the case lock.



METAL BRACKET - KIT SUPP. EXPL

KIT SUPP.EXPL.

KIT SUPP. EXPL - Kit includes 6 pcs. All models (except for the 1908) are internally equipped with specific slots, to apply the optional metal or plastic brackets which provide either a panel's fixing points or a fix mechanical joint inside the case, to build more complete applications. This way the case becomes a real workstation, rather than just a carrying container. As the panel mounting brackets are mechanically fixed by screws, they can be removed when necessary. The dedicated screws allow the case to remain waterproof, and help the panels to be removed easily and quickly



FOAM SET FOR CASE 11413

FOAM.11413

Layers of pre-cubed foam for the bottom and convoluted foam for the lid. The pre-cubed foam allows the user to tailor the insert to their own individual requirement. The convoluted foam in the lid helps to firmly keep the stored equipment when the case is closed. Available for 11413 model. Color: dark grey. [DOWNLOAD PDF](#)



PLASTIC BRACKET

KIT SUPP.PLAST.

Kit includes 6 pcs. All models (except for the 1908) are internally equipped with specific slots, to apply the optional metal or plastic brackets which provide either a panel's fixing points or a fix mechanical joint inside the case, to build more complete applications. This way the case becomes a real workstation, rather than just a carrying container. As the panel mounting brackets are mechanically fixed by screws, they can be removed when necessary. The dedicated screws allow the case to remain waterproof, and help the panels to be removed easily and quickly



CONVOLUTED FOAM SET FOR CASE 11413

LIDFOAM.114

(includes 2 pcs.)



PADDED GUN BAG FOR CASE 11413

GBAG 114

Padded gunbag to protect long guns. Inclusive of a number of features to secure rifles and shotguns together with necessary accessories and ammunitions. GBAG 114 is designed to perfectly fit into Explorer Cases model 11413. The gunbag is built with durable, 600D tear resistant polyester and robust zipper with lockable Velcro pull zipper for the main compartment. The main compartment features two neoprene hook-and-loop side flaps and adjustable straps to secure firearms. The front central compartment is equipped with adjustable interior straps to secure rifle position. The two side smaller pouches are designed to storage accessories and ammunitions. Both the main and front compartments are padded on all sides to protect and transport critical gear. This long gun bag features top and bottom compression straps and come with a removable shoulder strap. Personal ID window on the backside and front removable hook-and-loop screen-printable band. The gunbag can easily become a backpack by fixing the BACKPACK KIT in its rear side (see BACKPACK KIT accessory in BACKPACK SYSTEMS section for more details).

SPARE PARTS



Metal clips for mod.

3005-4209-16-4412-19-4820-5140-5218-21-5325-26-5822-23-33-762
6-30-35-41-7726-45-7814-9413-33-10826-40-11413-13513-27-15416

KIN.1214

Includes: 4 metal reinforcements



Grey trigger pull release latch for models

7814-9413-9433-11413-13513-13527

KIN.1283

Includes: 1 black latch 1 fixing pin



Transparent PC name tag for mod.

4209-4216-4412-4419-4820-5218-5221-5325-5326-5822-5823-5833-
7626-7630-7635-7641-7726-7745-7814-9413-9433-10826-10840-114
13-13513-13527-15416-MUB65

KIN.0969

Includes: 1 transparent name tag holder



Wheels for models 9413-11413-13513

KIN.0545

Includes: 2 wheels with bearings 2 snap rings (Seeger) 2 fixing pins



Side handle for models 9413-11413

KIN.0419

Includes: 1 black handle 2 fixing pins



Side handle for models 9413-11413

KIN.0428

Includes: 1 military green handle 2 fixing pins



Handle for mod.

7630-7726-7745-11413-13513-13527-15416-10826-10840-MUB78

KIN.0425

Includes: 1 black handle 2 fixing pins



Handle for mod.

7630-7726-7745-11413-13513-13527-15416-10826-10840-MUB78

KIN.0881

Includes: 1 sand handle 2 fixing pins



KIN.0446

Easy-opening latch for models from 3818 up

KIN.0446

Includes:
1 black latch
1 fixing pin



KIN.0435

Easy-opening latch for models from 3818 up

KIN.0435

Includes:
1 military green latch
1 fixing pin



KIN.0882

Side handle for models 9413-11413

KIN.0882

Includes:
1 sand handle
2 fixing pins



KIN.0424

Handle for models

7630-7726-7745-11413-13513-13527-10826-10840-15416-MUB78

KIN.0424

Includes: 1 military green handle 2 fixing pins



Polyurethane o-ring seal for model 11413

KIN.0855

Includes:
1 o-ring



Easy-opening latch for models from 3818 up

KIN.0883

Includes:
1 sand latch
1 fixing pin



Handle for models

7630-7726-7745-11413-13513-13527-10826-10840-15416-MUB78

KIN.0423

Includes: 1 orange handle 2 fixing pins