

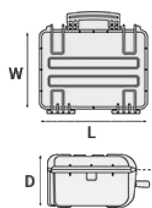
Mod. 13513.GGB

COPOLYMER POLYPROPYLENE WATERPROOF CASE

Large rifle cases ideal for carrying long rifles and accessories. Optional shoulder strap. Wheels with bearings. Available in black, olive drab and desert tan colors. OEM colors on demand.



METRIC MM-KG-C°



INTERNAL DIMENSIONS

L LENGTH	1350 mm
W WIDTH	350 mm
D DEPTH	135 mm
LID	42 mm
BASE	93 mm

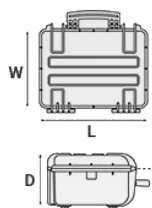
EXTERNAL DIMENSIONS

L LENGTH	1430 mm
W WIDTH	415 mm
D DEPTH	159 mm

OTHER DATA

WEIGHT EMPTY	8.70 Kg
WEIGHT WITH FOAM	9.95 Kg
WEIGHT WITH CUSTOM FOAM	Kg
VOLUME	63.70 lt
BUOYANCY	39.50 Kg/max
OPERATING TEMPERATURE	°C min -33 / max +90

IMPERIAL IN-LBS-F°



INTERNAL DIMENSIONS

L LENGTH	53 1/8 in
W WIDTH	13 3/4 in
D DEPTH	5 5/16 in
LID	1 5/8 in
BASE	3 11/16 in

EXTERNAL DIMENSIONS

L LENGTH	56 5/16 in
W WIDTH	16 5/16 in
D DEPTH	6 1/4 in

OTHER DATA

WEIGHT EMPTY	19.18 lbs
WEIGHT WITH FOAM	21.93 lbs
WEIGHT WITH CUSTOM FOAM	lbs
VOLUME	16.82 gal
BUOYANCY	87.08 lbs/max
OPERATING TEMPERATURE	°F min -27.4 / max +194

FEATURES



AUTOMATIC VALVE

Automatic pressure release valve.



CORROSION PROOF METAL HINGES WITH LID STAY FEATURES



INTERNAL SLOTS

Internal slots for optional panel mounting brackets or panel mounting rings



LARGE FRONT HANDLE



JAM FREE LATCHES WITH EASY-OPENING MECHANISM

(from model 3818 on)



SEALING O-RING

(Art. NEOSEAL + nr. art.)



PVC WATERPROOF I. D. REMOVABLE LABEL

(Art. LABELCOVER + nr. art.)



OPTIONAL SHOULDER STRAP (universal)

(art. SHOULDERKIT.U)



TWO MAN LIFT SIDE HANDLES



WHEELS WITH BEARINGS

ACCESSORIES



PADDED GUN BAG FOR CASES 13513-13527

GSLEEVE 135

Designed to secure your valuable rifle and accessories, the new G Sleeve bags provide protection in a highly mobile condition. A lightweight ruggedized 600D polyester outer fabric protects from humidity, while a padded interior keeps your rifle well protected. The internal rifle retention straps and the neoprene side flaps keep your firearm properly fixed.



PROTECTIVE SLEEVE FOR PC 15"-15.6"

TOP ENVELOPE 15

Protective padded notebook sleeve. Protects the laptop from shocks and scratches.



PROTECTIVE SLEEVE FOR PC 13"-13.3"

TOP ENVELOPE 13

Protective padded notebook sleeve. Protects the laptop from shocks and scratches.

HBAG135



Fits into 13513 case - x 2 pcs.

PADDED TWIN GUN BAG FOR CASE 13513

HBAG135

The new hunting gun sleeves are the latest accessories to carry and securely protect two guns inside our hard waterproof cases. These bags couple and lock together, or can be used also independently to carry the gun on the field.



ADJUSTABLE SHOULDER KIT

SHOULDERKIT.U

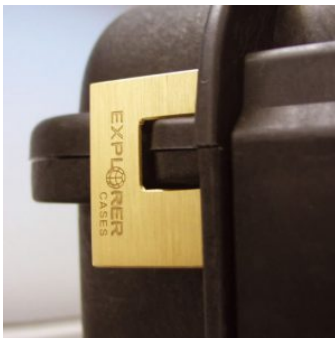
The kit is composed by: shoulder strap with plastic endings, 4 threaded knots, 2 metal plates. (min. extension 106 cm, max. extension 201 cm). The strap comes with the Explorer logo. Suitable for models: 1908, 1913, 2209, 2214, 3005, 4412, 4419, 5117, 9413, 11413 and 13513.



HANDY BACKPACK CARRYING SYSTEM FOR GUNBAGS

BACKPACK KIT

Practical and easy to fix kit to turn the gunbags into backpacks to safely transport your rifles. The detachable, padded shoulder straps, clip right in the back of the gunbags D-rings. The ergonomic straps are designed to be fully adjustable in length. It works on GUNBAG 94, GUNBAG 114, GUNBAG 135 and GUNBAG 108. Color: black.



PATENTED HEAVY DUTY BRASS PADLOCK WITH KEYS

EXPL PADLOCK

Designed to fit snug to the Explorer case mould so as not to swing out



DIGITAL LOCK FOR CASES 9413, 9433, 11413, 13513, 13527, 15416, 10826 AND 10840

KIT.DL

Kit includes 2 pcs.



PATENTED COMBINATION PADLOCK

EXPL COMBILOCK

Designed to fit snug to the Explorer case mould so as not to swing out



BLIND INSERT

KIT.EXPL.PLUGS

Kit includes 6 pcs. Whenever the slots are not going to be used for in-built applications, those can be closed by blind inserts that will give the case a better and finished interior look.



TSA APPROVED PADLOCK WITH COMBINATION

EXPL TSA.DIGILOCK

The new TSA approved padlocks allow tsa® airport security agents to open the case without destroying the lock. TSA agents are trained to recognize the travel sentry certified logo and should not break the case lock.



METAL BRACKET - KIT SUPP. EXPL

KIT SUPP.EXPL.

KIT SUPP. EXPL - Kit includes 6 pcs. All models (except for the 1908) are internally equipped with specific slots, to apply the optional metal or plastic brackets which provide either a panel's fixing points or a fix mechanical joint inside the case, to build more complete applications. This way the case becomes a real workstation, rather than just a carrying container. As the panel mounting brackets are mechanically fixed by screws, they can be removed when necessary. The dedicated screws allow the case to remain waterproof, and help the panels to be removed easily and quickly



FOAM SET FOR CASE 13513

FOAM.13513

Layers of pre cubed foam for the bottom and convoluted foam for the lid. The pre-cubed foam allows the user to tailor the insert to their own individual requirement. The convoluted foam in the lid helps to firmly keep the stored equipment when the case is closed. Available for 13513 model. Color: dark grey. [DOWNLOAD PDF](#)



PLASTIC BRACKET

KIT SUPP.PLAST.

Kit includes 6 pcs. All models (except for the 1908) are internally equipped with specific slots, to apply the optional metal or plastic brackets which provide either a panel's fixing points or a fix mechanical joint inside the case, to build more complete applications. This way the case becomes a real workstation, rather than just a carrying container. As the panel mounting brackets are mechanically fixed by screws, they can be removed when necessary. The dedicated screws allow the case to remain waterproof, and help the panels to be removed easily and quickly



CONVOLUTED FOAM SET FOR CASE 13513 AND 13527

LIDFOAM.135

(includes 2 pcs.)



PADDED GUN BAG FOR CASE 13513 AND 13527

GBAG 135

Padded gunbag to protect long guns. Inclusive of a number of features to secure rifles and shotguns together with necessary accessories and ammunitions. GBAG 135 is designed to perfectly fit into Explorer Cases models 13513 and 13527 (up to two pieces). The gunbag is built with durable, 600D tear resistant polyester and robust zipper with lockable Velcro pull zipper for the main compartment. The main compartment features two neoprene hook-and-loop side flaps and adjustable straps to secure firearms. The front central compartment is equipped with adjustable interior straps to secure rifle position. The two side smaller pouches are designed to storage accessories and ammunitions. Both the main and front compartments are padded on all sides to protect and transport critical gear. This long gun bag features top and bottom compression straps and come with a removable shoulder strap. Personal ID window on the backside and front removable hook-and-loop screen-printable band. **Full-opening zipper for shooting mat configuration.** The gunbag can easily become a backpack by fixing the BACKPACK KIT in its rear side (see BACKPACK KIT accessory in BACKPACK SYSTEMS section for more details).

SPARE PARTS



Metal clips for mod.

**3005-4209-16-4412-19-4820-5140-5218-21-5325-26-5822-23-33-762
6-30-35-41-7726-45-7814-9413-33-10826-40-11413-13513-27-15416**

KIN.1214

Includes: 4 metal reinforcements

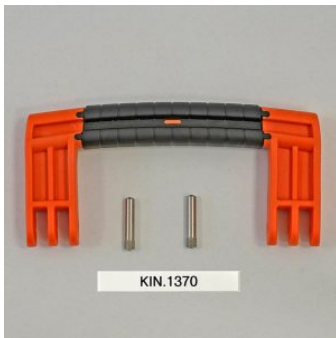


Grey trigger pull release latch for models

7814-9413-9433-11413-13513-13527

KIN.1283

Includes: 1 black latch 1 fixing pin



Side handle for mod.

5822-5823-5833-7626-7630-7635-7641-7726-7745-13513-13527

KIN.1370

Includes: 1 orange handle 2 fixing pins



Side handle for mod.

5822-5823-5833-7626-7630-7635-7641-7726-7745-13513-13527

KIN.1368

Includes: 1 military green handle 2 fixing pins

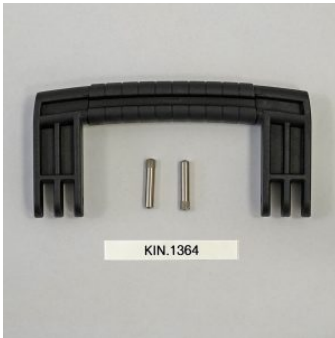


Side handle for mod.

5822-5823-5833-7626-7630-7635-7641-7726-7745-13513-13527

KIN.1366

Includes: 1 desert tan handle 2 fixing pins



Side handle for mod. 5131-7626HL-7635HL-7814HL

KIN.1364

Includes: 1 black handle 2 fixing pins



Transparent PC name tag for mod.

4209-4216-4412-4419-4820-5218-5221-5325-5326-5822-5823-5833-7626-7630-7635-7641-7726-7745-7814-9413-9433-10826-10840-11413-13513-13527-15416-MUB65

KIN.0969

Includes: 1 transparent name tag holder



Wheels for models 9413-11413-13513

KIN.0545

Includes: 2 wheels with bearings 2 snap rings (Seeger) 2 fixing pins



Side handle for models

5325-5326-5822-5823-5833-7630-7814-13513-13527-15416

KIN.0426

Includes: 1 orange handle 2 fixing pins



Side handle for models

5325-5326-5822-5823-5833-7630-7814-13513-13527-15416

KIN.0880

Includes: 1 sand handle 2 fixing pins



Side handle for models

5325-5326-5822-5823-5833-7630-7814-13513-13527-15416

KIN.0412

Includes: 1 black handle 2 fixing pins



Handle for mod.

7630-7726-7745-11413-13513-13527-15416-10826-10840-MUB78

KIN.0425

Includes: 1 black handle 2 fixing pins



Handle for mod.

7630-7726-7745-11413-13513-13527-15416-10826-10840-MUB78

KIN.0881

Includes: 1 sand handle 2 fixing pins



Side handle for models

5325-5326-5822-5823-5833-7630-7814-13513-13527-15416

KIN.0448

Includes: 1 military green handle 2 fixing pins



Handle for models

7630-7726-7745-11413-13513-13527-10826-10840-15416-MUB78

KIN.0424

Includes: 1 military green handle 2 fixing pins



Polyurethane o-ring seal for models 13513 and 13527

KIN.0856

Includes:
1 o-ring



Manual pressure release valve for models from 2712 up (except mod. 3005)

KIN.0495

Includes: 1 black purge valve (+ o-ring + pin) 1 threaded bush 1 snap ring (Seeger)



Handle for models

7630-7726-7745-11413-13513-13527-10826-10840-15416-MUB78

KIN.0423

Includes: 1 orange handle 2 fixing pins